

Kwun - B30L2

PV panels cleaning robot Kwun manual

Please read this manual carefully before using
the product and keep it properly.

Kwunphi into possible, Kwunphi into habit.

崧出可能，崧成习惯

Directory

- 1.Safety instructions1
- 2.Attention1
- 3.Product introduction 2
- 4.Use guide6
- 5.APP Use guide21
- 6.Optional features27
- 7.Replacement of accessories31
- 8.Daily cleaning and maintenance33
- 9.Recommended Operating Conditions34
- 10.Troubleshooting35
- 11.Limited warranty Policy36
- 12.Warranty and after-sales service40

1. Safety instructions

Before using this product, please carefully read all safety and operation instructions in this manual. Operation in violation of the manual may cause danger or damage to the equipment.

2. Attention

1. Use the product as instructed in the manual. Only use the accessories recommended or sold by the manufacturer.
2. Make sure the supply voltage meets the voltage specified on the charger.
3. Before using the product, make sure that the battery and shell have been installed in place, and the battery power is sufficient.
4. If the power cord is damaged, it must be replaced by the manufacturer, its maintenance department or a professional to avoid danger.
5. Please turn off the power switch or pull the plug from the power socket before cleaning and maintaining the product.
6. In case of power failure, waterproof covers must be installed on connectors and sockets, and ensure that the waterproof covers are clean and free of foreign matter.
7. Before placing the Kwun in the initial position of the photovoltaic array, ensure that the surface of the initial position is clean in advance to prevent the product from slipping or falling due to serious pollution of the track.
8. After cleaning job, clean the anti-fall sensor with a wet towel and then wipe it with a dry towel to prevent excessive accumulation of dust and affect the perception.
9. Before discarding the product, turn off the power switch and remove the battery. Remove and discard the battery in accordance with local laws and regulations.
10. If the product is not used for a long time, please turn off the power switch and power off the product.
11. Wear ESD gloves when touching the Kwun.
12. It is only used in the PV array with an inclination of less than or equal to inclination 20° (dry brush) or 10 ° (wash) , the PV array edge range of 50cm is free of obstacles and the lowest point is suspended above 8cm.
13. Do not use the product in an extremely hot (above 45°C) or extremely cold (below -20°C) environment.
14. Safety protection devices such as guardrail and protective shed should be built around the photovoltaic array to prevent safety accidents.
15. When the product is operated at a height above 2m (including 2m) which is likely to fall, it shall follow the Technical Specification for Safety of Operation at Height in Construction.
16. Do not use the product when it cannot work normally due to drop or damage. To avoid injury, the product should be repaired by the manufacturer or its after-sale service.
17. Please use the product according to the instructions in the manual. Kwunphi company is not responsible for any loss or injury caused by improper use.

3. Introduction

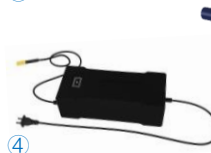
3.1 Name & Model

Name : Kwun

Model : Kwun-B30L2

3.2 Parts list

No.	Name	Quantity
1	Kwun body (model : Kwun-B30L2)	1 pcs
2	Track	2 pcs
3	Battery	2 pcs
4	Recharger	1 pcs
5	Kit (wrench & clamp pliers & cross screwdriver & plumber's tape & water saving nozzle)	1 pcs
6	Self cleaning stuff	8 pcs
7	Rolling brush assembly (default type B)	2 pcs
8	Water Cube	1 pcs
9	Operating instruction	1 pcs



* According to different areas, choose different models of chargers.

* Self cleaning stuff is only used for dry brushing, please remove it by yourself when washing.

* Due to the needs of continuous improvement of the product, this material product is subject to the physical, our company reserves the right to update the product.

3. Introduction

3.3 Optional accessories

Water cube	The battery	4G network module	M4 hexagon socket wrench	5.5-7 open end wrench
B type roller brush support	The charger	Central suction cup	M5 inner hexagon wrench	8-10 Open end wrench
C type roller brush support	Track	Dust cover for central suction cup	M8 inner hexagon wrench	13-15 Open end wrench
B type roller	Shading brush	Vacuum filter	Clamp pliers	Plumber's tape
C type roller	Self cleaning stuff	-	Phillips screwdriver	Water saving nozzle

3.4 Roll brush type description

Type	Effective cleaning width	Applicable PV panel size type
B	1150mm	125mm(125mm) M2(156mm) G1(158mm) M4(162mm) M6(166mm) M10(182mm)
C	1320mm	G12(210mm)

3.5 Specification

Model	Kwun-B30L2
Operating system	TianyunOS
Battery	25.2V 15.3Ah
Recharger out	29.4V=5A
Battery life	≈ 240min
Charging time	≈ 180min
Weight	21.15Kg / 23.8Kg(Included battery)
Size	L 585mm * W 560mm * H 250mm

* The actual data of battery life may be different due to different operating environment, load bearing, long-term battery loss and other factors.

* Equipment weight and size may vary slightly depending on material supplier, etc.



* The illustrations in this manual are for reference only. The actual appearance shall prevail.

3. Introduction

3.6 Water Cube

3.6.1 Water Cube connection

1. Fix the rotating table module base of the Rubik's Cube to the mounting hole of the shell through M4 captive bolts.
2. Fix the pipe support frame of the Rubik's Cube nozzle module to the roller brush support using M4 screws and nuts.
3. Connect the external water pipe to the pipe (M14 internal thread) on the upper end of the rotating table module through a quick connector.

3.6.2 Tool

One M5 inner hexagon wrench, one M8 inner hexagon wrench, one 5.5-7 open end wrench, one 8-10 open end wrench.

3.6.3 Tightening and adjustment

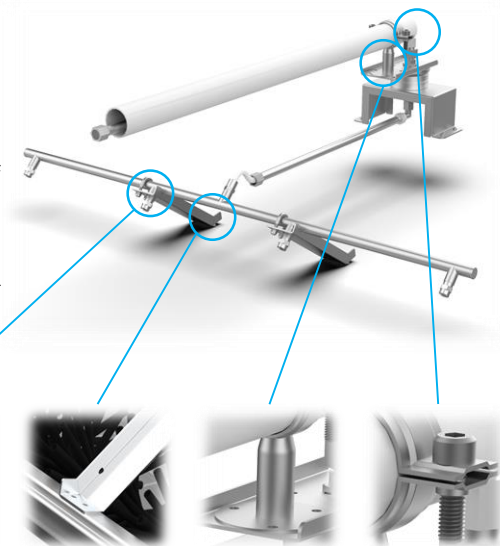
Tightened or Adjusted parts	Tool
U-bolt	10 Open end wrench
Fixed screw nut for pipeline support frame	7 Open end wrench M4 hexagon socket wrench
Fixing screws for PVC pipe	M8 inner hexagon wrench
Set screws and nuts for PVC pipe supports	8 Open end wrench M5 Inner hexagon wrench

3.6.4 External device

Need to purchase hydraulic press, universal rotary joint and hose to use together.

Collocation demonstration:

- M14 external thread to M22 external thread rotary universal rotary joint
- M14 braided high-pressure hose with 20m length and 8.5mm rotary joints with internal and external threads
- 1800W Hydraulic press (with water inlet and outlet pipe)



U-bolt

Pipeline support frame

PVC pipe support

Fixing screws for PVC pipe



① water inlet



⑤ hose



② hydraulic press

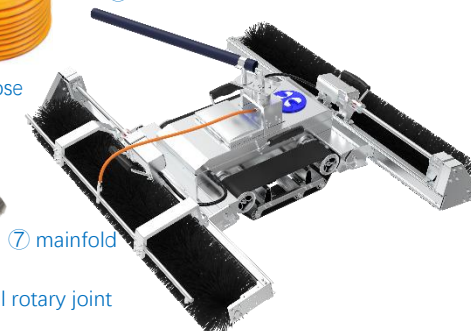


③ outlet pipe



④ universal rotary joint

⑥ water cube



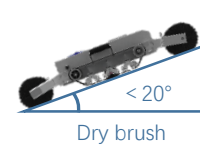
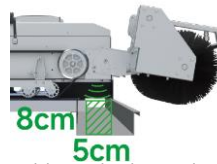
⑦ manifold

3.7 Module specification

[illegible]

4. Use guide

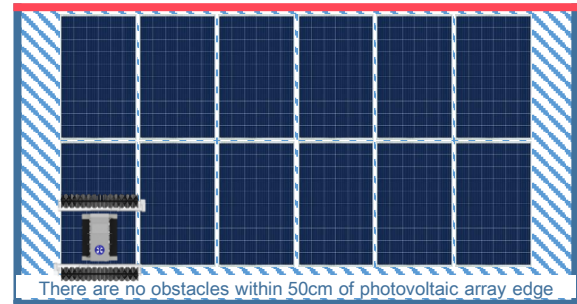
4.1 Application scenarios



1. PV array tilt less than 20° (dry brush) or 10° (wash). (This data ultimately depends on the characteristics of the contaminant.)
2. There are no obstacles in the PV array area, and the identification area at the bottom of the PV array edge is 5*8cm(width * depth) barrier-free.
3. The type and direction of the PV array modules are the same, and there are white intervals between the batteries of the modules.
4. The maximum dislocation less than 4cm of the upper、lower、left and right of the adjacent PV panel.
5. The spacing of photovoltaic modules is less than 4cm, and the height difference is less than 3cm.
6. The edge of the photovoltaic array is free of obstacles within a 50cm range. (If only the top is obstructed, you can use a custom limit on the number of rows to do not clean the top row)
7. The supported types of photovoltaic panel are as follows:

Main grid line	Type	Size(mm)	PCS
0BB	Full size	125	96
2BB	Full size	156	60
3BB	Full size/Half size	156/158	60/72
4BB	Full size/Half size	156/158	60/72
5BB	Full size/Half size	156/158	60/72
6BB	Full size/Half size	156/158	60/72
MBB	Half size	162/166	60/72
		182	60/72/54/66/78
		210	60/72/45/54/66/55
	One third	210	50

Obstacles such as walls and pipes should be within 50cm of the top edge of photovoltaic array



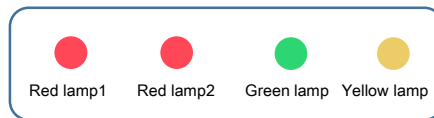
The interval between PV array is less than 4cm
The height difference is less than 3cm

- * In the case of self-identification, MBB default M6/166mm size, which can be customized.
- * The main grid line 0BB PV module needs to define the relative placement direction of Kwun: horizontal (H0BB) or vertical (V0BB).
- * PCS automatic identification only supports 60/72. If the application scenario is fixed, you are advised to use the custom scenario mode.
- * Situation of turning Kwun (including roller) barrier height should be less than 1.5 cm coverage area.
- * Safety protection devices such as guardrail and protective shed should be built around the photovoltaic array to prevent safety accidents.
- * When the product is operated at the height above 2m (including 2m), which is likely to fall, it should follow the Technical Specification for Safety of Operation at High Places in Construction.
- * Due to the needs of continuous improvement of the product, this material product is subject to the physical, our company reserves the right to update the product.

4. Use guide

4.2 Interactive instructions

4.2.1 Light color instruction



Pilot lamp	Appearance	Content
Red lamp1	Normally off	Drive sensors are all normal
	Normally on	The battery is low, need to be charged or replaced
		During the operation, the driving failure will automatically switch to standby mode, which needs to be restarted and repaired
	2.50Hz flashing	There is an abnormality in the left ultrasonic anti-fall sensor
	1.25Hz flashing	There is an abnormal ultrasonic drop sensor on the right side
	0.50Hz flashing	There is an abnormality in the pressure or temperature detection module
Red lamp2	Normally off/Normally on	Internal communication of the device is normal/failed
	flashing	When standby, if startup conditions are not met, the device shall be completely placed on the PV surface with an inclination less than 20°
		When turning, the central sucker is lowered to complete the sucker, but the adsorption effect is not good, unable to meet the turning conditions
Green lamp	Normally on	Standby
	flashing	Autonomous operation/remote control/remote control status
Yellow lamp	Normally off/Normally on	The network status is normal or the remote control takeover / network status is abnormal

4.2.2 Buzzer

Ringling times	One ringing	Continued ringing
Content	Operation mode switching	Actuator error fault alarm
	The bottom layer of the communication change	Operation abnormal alarm

4. Use guide

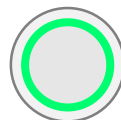
4.2 Interactive instructions

4.2.3 Button



Power button

Power on or off

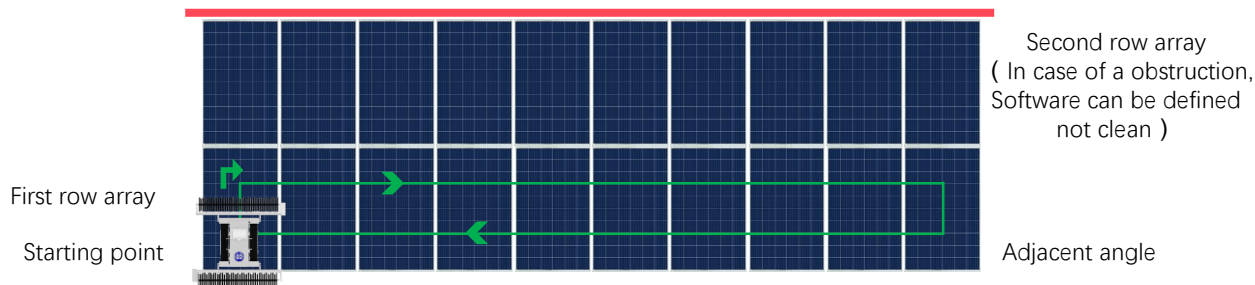


Start/Standby button

Start or cancel autonomous jobs
Turn off the buzzer alarm

4.2.4 Autonomous mode

Barriers, such as walls and pipes, are within 50cm of the top edge of the photovoltaic array



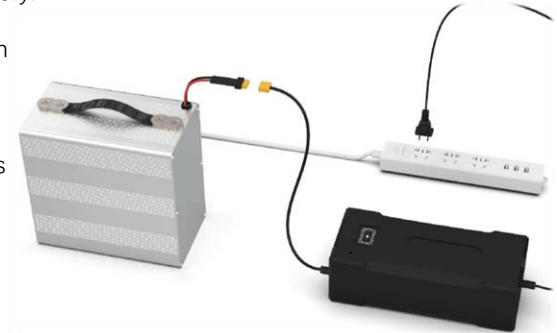
Content	Option	Timing	Default
Type of PV module	Full size/Half size/One third	Standby	Full size
Grid line, size, number of pieces	Automatic recognition or custom patterns	standby	Automatic recognition
Anchor pattern	Berthing at start point/Adjacent angle	Standby	Berthing at start point
Cleaning tasks	1 ~ 10/999 times	Online	1 time
Array row limit	No limit/1 ~ 100 rows	Standby	No limit
Cleaning mode	Array/Single bottom Quick/Normal/Deep/Severe	Standby	Array Normal

4. Use guide

4.3 How to Use batteries

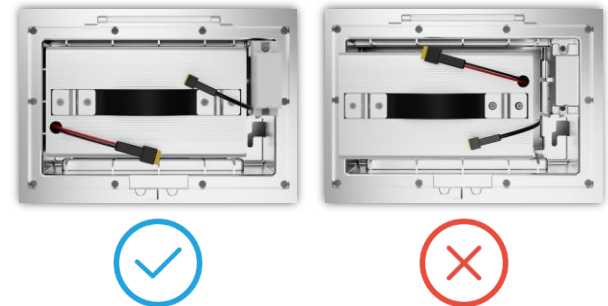
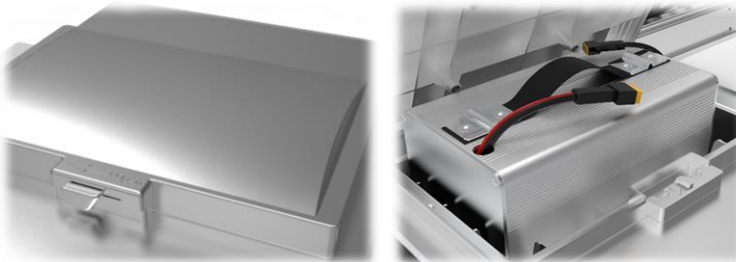
4.3.1 Charging

1. Ensure that the battery is not working. Take out the battery or spare battery.
2. Insert the output port of the charger into the XT60 port of the battery.
3. Insert the input plug of the charger into the 220V power socket, and then turn on the power supply of the socket.
4. Wait until the red light of the charger turns on and the battery starts charging.
5. It takes about 3 hours to fully charge, when the red light of the charger is off, the green light is on, and the charging is finished.
6. Turn off the power from the socket and remove the input plug of the charger.
7. Remove the battery from the outlet of the charger and store it.



4.3.2 Battery installation

1. Remove the bolts securing the battery cover using an M4 hexagon key.
2. Align the battery, and connect the battery outlet to the XT60 port on the opposite side of the connection port.
3. Close the battery cover and tighten the bolts using an M4 hexagon key.

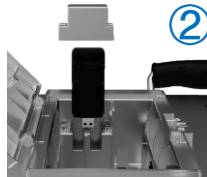


* For more tutorials and videos on how to use Kwun, please visit our official website

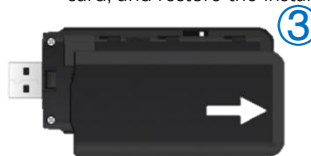
4. Use guide

4.4 How Do I Use 4G Network Modules

1. Open the battery cover and remove the 4G network cover using a Phillips screwdriver.

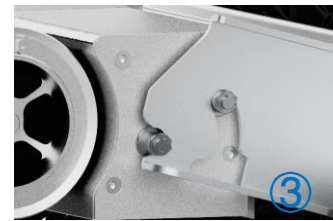
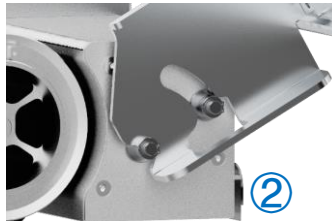
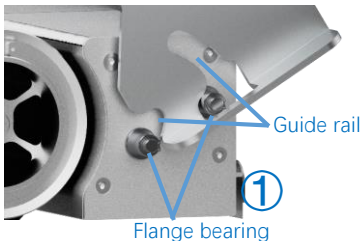


2. Take out the 4G network module, remove the cover, insert the Nano SIM card, and restore the installation.



4.5 How to Use roller brush

1. Hold the roller brush holder and lift the roller brush holder. Insert the flange bearing corresponding to the rotating guide rail connecting the roller brush holder.



2. Ensure that the air socket is powered off, open the waterproof cover, connect the air socket according to the limit prompt, and complete the installation.

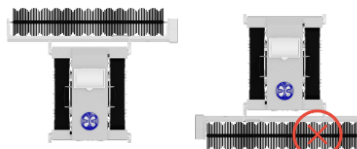
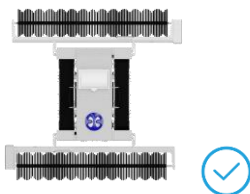


* For more tutorials and videos on how to use Kwun, please visit our official website

4. Use guide

4.5 How to Use roller brush

- * In double roller brush cleaning mode, roller brush components are not front and rear, and can be exchanged at will.
- * **Do not use single rolling brush cleaning mode** to avoid falling risks.



- * Make sure the aviation plug is fully inserted according to the limit prompt and the spring button is up.



- * Do not install the limit bolt of the roller brush assembly askew, otherwise the screw hole will be damaged.



- * For more tutorials and videos on how to use Kwun, please visit our official website

4. Use guide

4.6 How to use this product

4.6.1 Pre-operation inspection

4.6.1.1. Check **track surface** cleanliness to prevent significant loss of grip. (It is forbidden to lift the upper hanging part of the track to prevent deformation and damage of the front and rear axles)



4.6.1.2. Check whether there are foreign bodies under the anti-fall sensor to prevent abnormal anti-fall perception. (It is strictly forbidden to be squeezed by external forces)



4.6.1.3. Check that the battery cover is firmly closed.

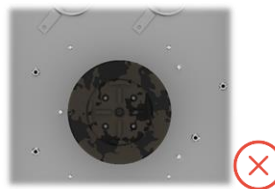
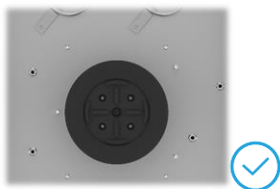


4. Use guide

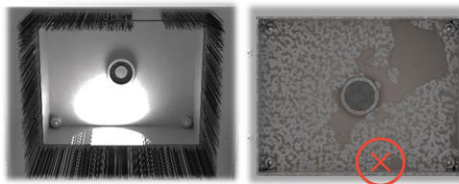
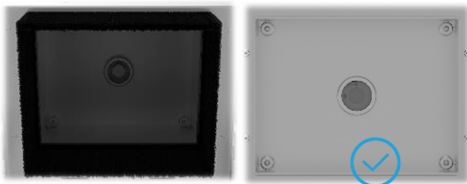
4.6 How to use this product

4.6.1 Pre-operation inspection

4.6.1.4. Check the cleanliness of the suction cup surface at the bottom of the central sucker assembly to prevent a significant reduction in grip.



4.6.1.5. Check whether the cleanliness of the camera lens and the body of the exposure box and the shading plate completely cover the projection plane area of the exposure box to prevent sunlight and dust from interfering with the camera.



4.6.1.6. Check the type of roller brush and whether it is deformed to prevent the cleaning effect. (Refer to "Description of Brush Component Types" on page 3 for usage scenarios corresponding to brush types.)



- * When the roller brush is idle, Should be on the motor, erect rely on placing, Avoid compression deformation of roller brush bristles.
- * If the bristles are deformed under pressure for a long time, It will cause the bristles to become irreversibly deformed.
- * When moving the roller brush, special handle should be raised. It is strictly forbidden to pull the roller brush shaft to prevent deformation and damage of the roller brush shaft.

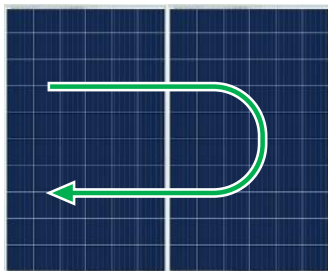
* For more tutorials and videos on how to use Kwun, please visit our official website

4. Use guide

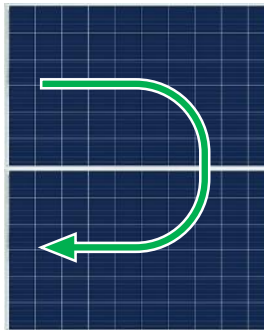
4.6 How to use this product

4.6.2 Placing

1. The number of turns is equal to the number of turns in a single row multiplied by the number of array rows.

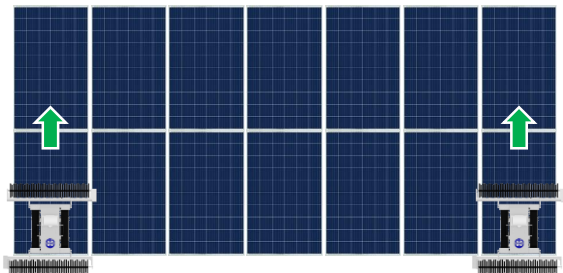


Vertical layout(V)
Two turns in a row

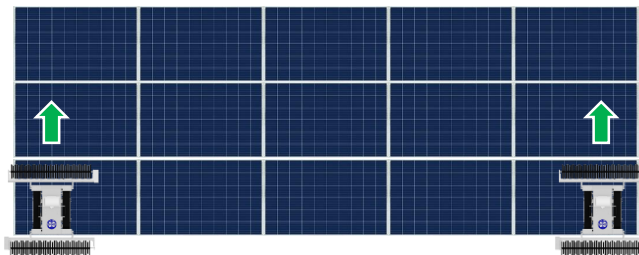


Horizontal layout(H)
Two turns in two rows

2. Select the starting point with the least number of turns for H autonomous operation.



Turn times of V autonomous operation= 4



Turn times of H autonomous operation= 3

3. Generally, use the side that is easy to carry and operate the device as the starting end, that is the bottom of the array.

*** Ensure that the surface of the initial position is clean to prevent the product from slipping or falling due to heavy contamination of the tracks**

4. Use guide

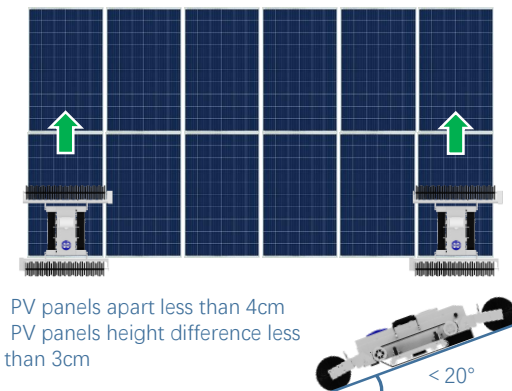
4.6 How to use this product

4.6.3 Start the Kwun

1. Corner placement

Select the starting point with the least number of turns for horizontal autonomous operation.

Kwun is placed on the bottom corner of the left and right sides of the photovoltaic array that meets the requirements.



The identification area at the bottom of the PV array edge is 5*8cm(width * depth) barrier-free.

2. Turn on the power

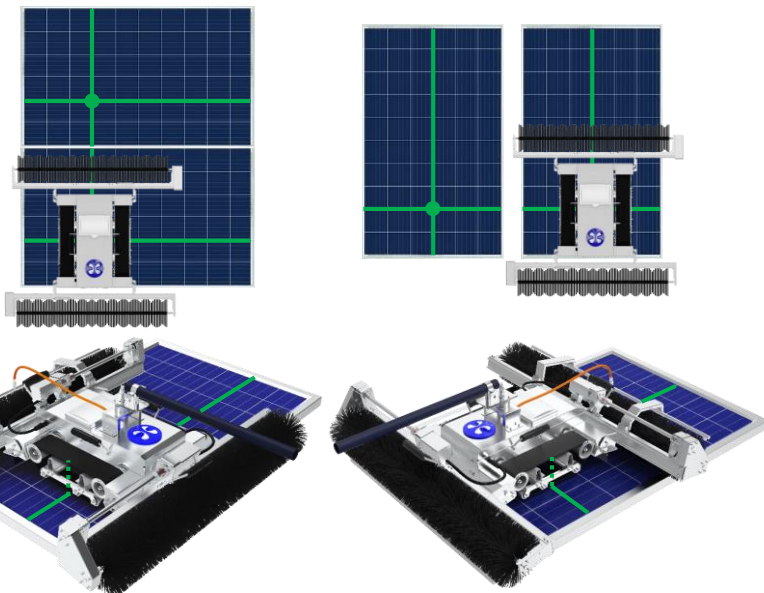
Press the power button to start the device. When the first red light is often off (the buzzer rings once), the device is normal and enters the initialization state.



*** Ensure that the surface of the initial position is clean to prevent the product from slipping or falling due to heavy contamination of the tracks**

3. Position calibration

Adjust the horizontal central axis of the device to the spacing line of the cells in row 2 and row 3 in the lower corner, and the horizontal central axis to the spacing line of the cells in row 3 and row 4 in the lower corner.



* Holes on the support plate of the synchronous wheel indicate the central position of Kwun, which can assist in position calibration.

* The main grid line 0BB PV module needs to be closer to the interior due to size problem, and should be placed according to the number of rows and columns +1 indicated above.

4. Start the job

When the green light is always on and the red light is often off, the device is normal and the initialization is successful, then press the Start/Standby button to make the device start autonomous operation.

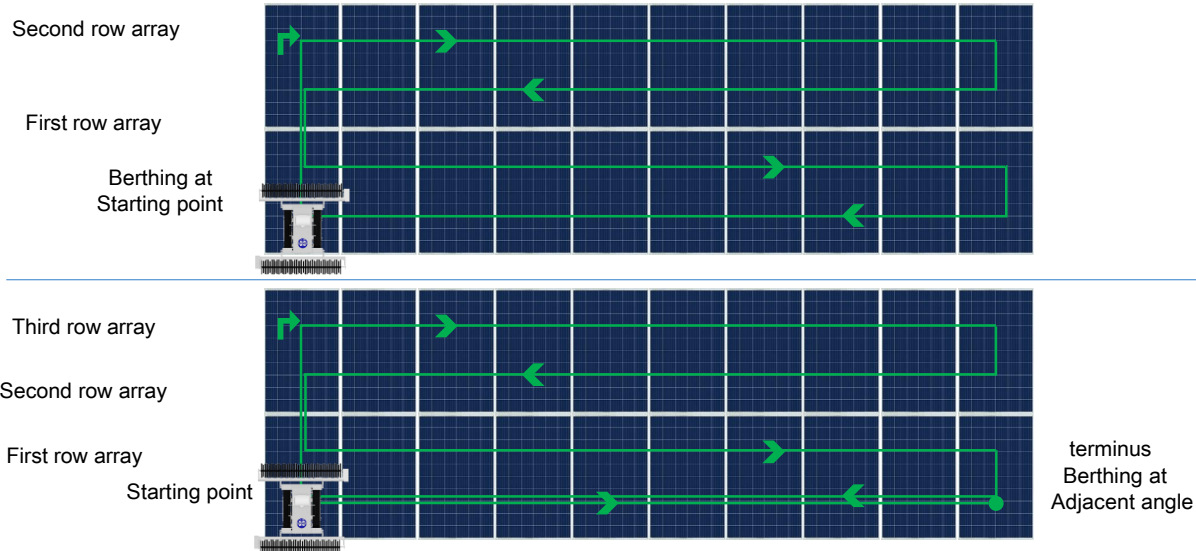


4. Use guide

4.7 Function application

4.7.1 Unmanned cleaning / 4.7.1.1 Array

After the start and identification is completed, the Kwun climbs up to the top of the photovoltaic array and tries the direction. After the direction is determined, the operation begins. The Kwun turns around to span until the array is covered, and chooses the termination according to the berthing mode.



4.7.1 Unmanned cleaning / 4.7.1.2 Single bottom

After the start and identification is completed, the Kwun independently operates forward to the edge of the photovoltaic array to complete the single bottom edge operation. (Recommended for cleaning array ash zone)



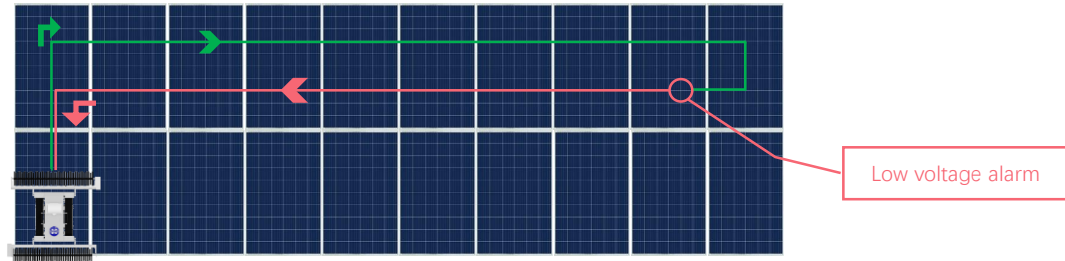
* If the bottom edges are stubborn stains, it is recommended to use single bottom/severe cleaning mode for cleaning.

4. Use guide

4.7 Function application

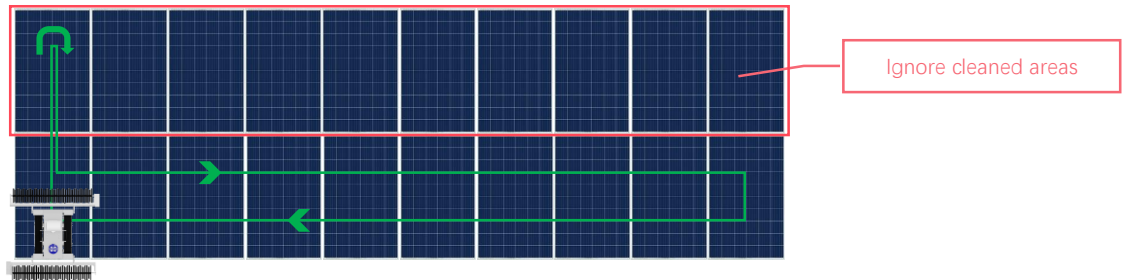
4.7.2 Low voltage return

In the process of autonomous operation, when the battery power is low, the Kwun will automatically enter the low-voltage return mode and return to the starting position.



4.7.3 Breakpoint memory

Choose to skip part of the cleaned area, find the location where the last job was interrupted, and start another job from there.



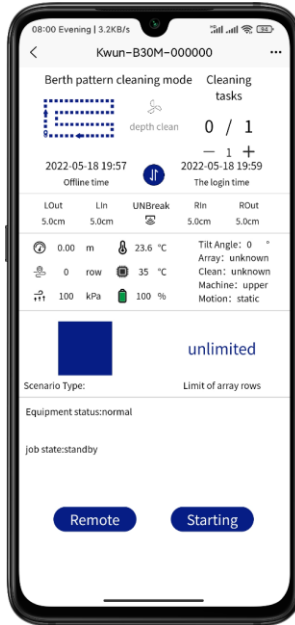
- * To disable this function, press the Start/Standby button during the climb.
- * The breakpoint resume cleaning function is turned on again the next time a job is interrupted, or it can be turned off permanently with the AI-Kwun's Resume Cleaning Setting.

4. Use guide

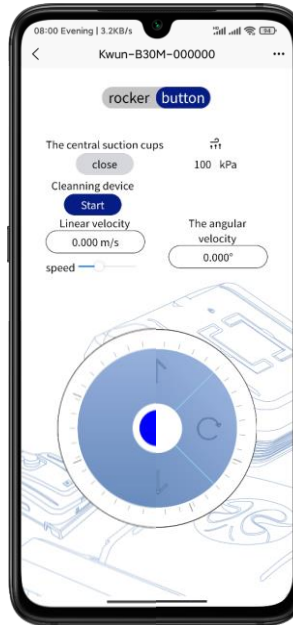
4.7 Function application

4.7.4 APP monitoring

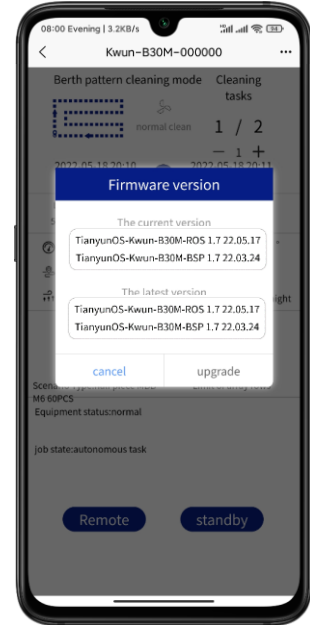
Kwun status display and mode customization Settings and other operations
Basic interaction



Joystick and button modes manually control Kwun movement
Remote control

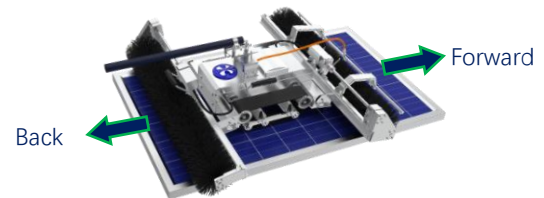


Software application in the air download upgrade
OTA



- * Remote control mode is a header mode with kwun itself as the reference coordinate system,
- * Instead of headless mode with geographic or operator reference frames.

* For more APP tutorials, see Chapter 5 APP Usage Guide



4. Use guide

4.8 Technical solution of connecting bridge

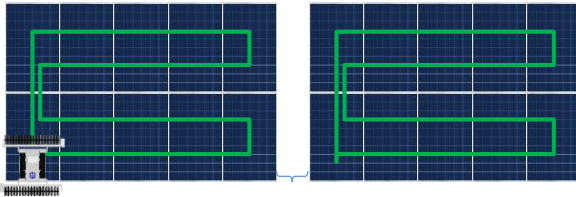
4.8.1 The role of the bridge

During the installation layout design, corridors are reserved around the array. Under normal circumstances, the equipment cannot automatically cross gaps/corridors exceeding 5cm when operating independently. Therefore, when reaching the left and right edge aisles, turn around to continue the operation, and when reaching the front and rear end edge aisles, turn around to complete a cleaning task.

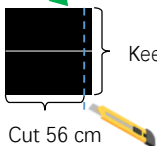
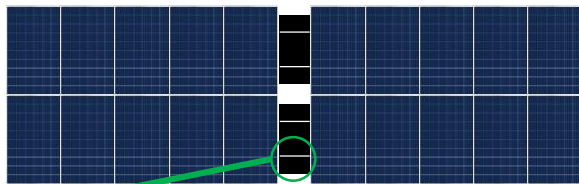
If the number of PV array is small, the time to complete an independent array is fast, and the frequency of moving or remote control to adjacent arrays is high.

Under the condition that safety conditions are met, the connecting bridge connects multiple photovoltaic arrays horizontally or longitudinally to minimize The Times of equipment handling or remote control and improve work efficiency.

4.8.2 Straddle bridge

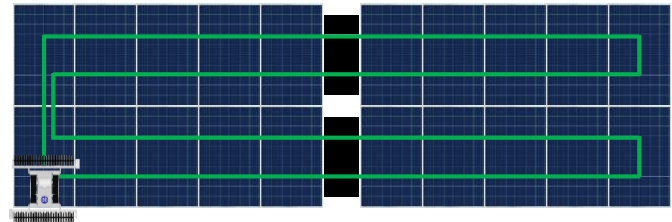


For example, the interval is 56cm



Keep the width 64cm

A total of four decks were laid



A black bridge deck with a width of 640mm and a virtual guide line with a width of 4~6mm white was laid horizontally along the operation track along the adjacent array aisle at the left and right ends.

The virtual guide line simplifies the surface texture of PV panel and only highlights the spacing stripes between PV cells.

In this way, the bridge deck will be simulated to replace the PV panel. Kwun will use the virtual main gate line along the bridge deck as the guide to successfully pass through the bridge deck and complete the cross-array operation.

4. Use guide

4.8 Technical solution of connecting bridge

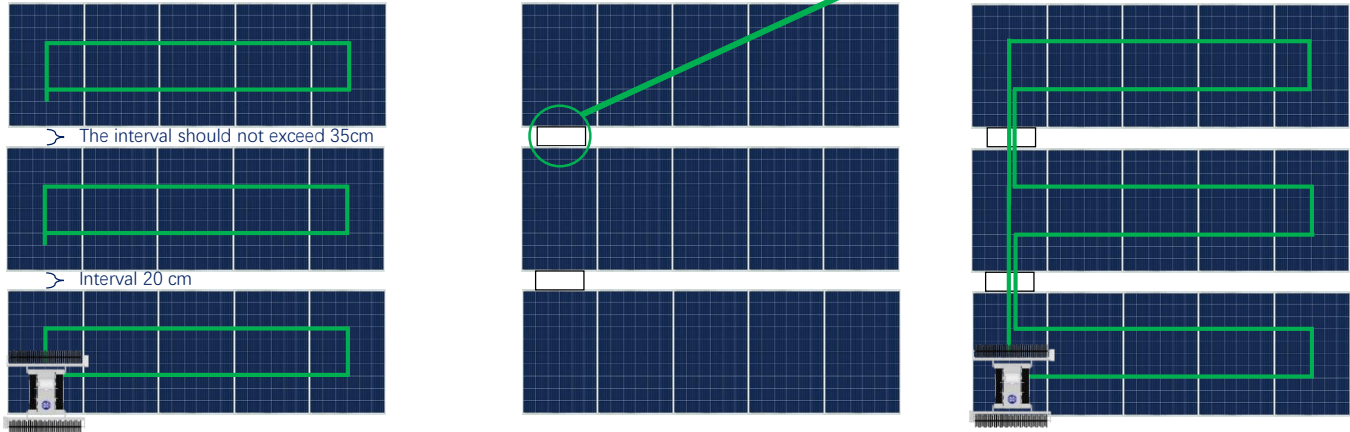
4.8.3 Cross link bridge

Due to safety reasons, the cross-bank process is technically limited.

If it is exceeded, an alarm will be sounded and autonomous operation will be interrupted.

Therefore, the length of the cross-line connection bridge is only allowed to be less than or equal to 35cm.

That is, you can use this method only when the distance between the front and rear ends of the PV array is less than or equal to 35cm.



A clean bridge deck without guide wires is laid horizontally along the Kwon's operation track on adjacent array aisles at the front and rear ends.

In this way, the bridge deck simulates replacing gaps between photovoltaic modules while meeting the height requirements of the plane,

Kwon will guide driving along the bridge deck without a straight line for a short time to pass through the bridge deck until stepping into the new array, and start the covering cleaning operation of the new array.

* For more information about kwon-B30 connection bridge construction, please visit the official website

5. APP Use guide

5.1 Software download

5.1.1 Android link

<https://file.kwunphi.com/app/aikwun/android/aikwun.apk>

5.1.2 iOS link

<https://apps.apple.com/us/app/id1616848453>, or search for "AI-Kwun" in the App Store.

5.2 Device connection

5.2.1 Account registration

- * Need to insert Nano SIM card
- * Main traffic usage scenario: device interface interaction is about 3.2KB/s, and one OTA is about 1-50MB
- * For specific operations, please refer to section 4 "How to Use 4G Network Module" in Chapter 4 "User Guide".

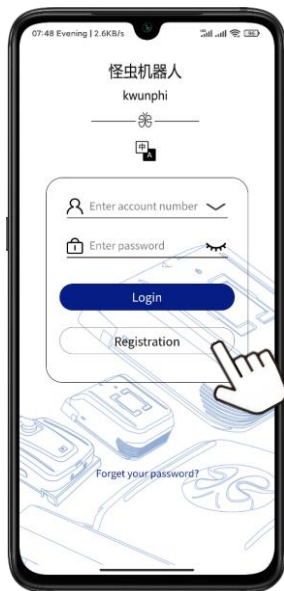
Scan QR code by browser



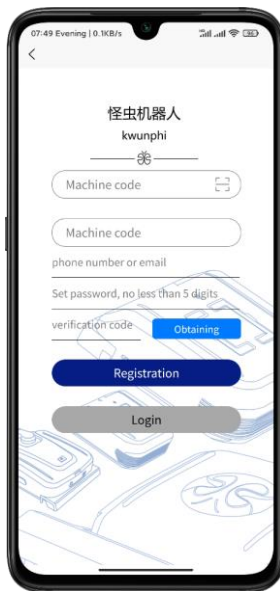
Android version APP



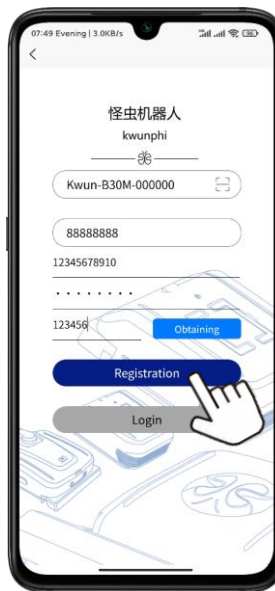
iOS version APP



Click the register button



Fill in relevant information



The Kwun's ID code is located on the underside of the battery cover. It is recommended to scan the QR code and fill in quickly



5. APP Use guide

5.2 Device connection

5.2.2 Login



Enter your account number and password

Click the login button



Enter the device list interface

5.2.3 Device list



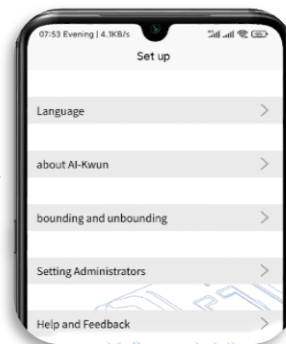
Custom Remarks
Hold down the device



Enter device details
Click the corresponding device
to view the details button



More Settings
Click on the Settings icon



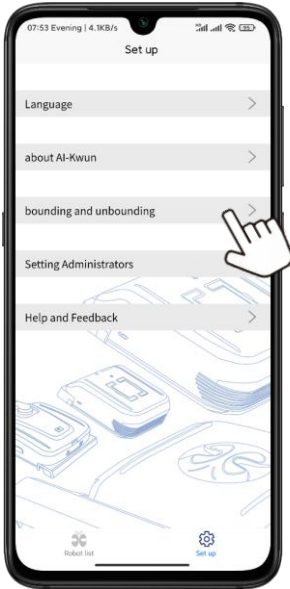
* You can switch between English and Chinese on the login screen or set language options on the screen to enter the language setting screen

* **For more tutorials on the APP, please visit the official website**

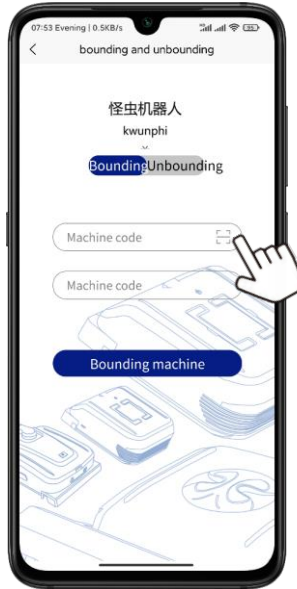
5. APP Use guide

5.2 Device connection

5.2.4 Add equipment



Enter the Kwun management interface
Click on Kwun Management



Click then binding
Or fill in the Kwun code and password



* For more tutorials on the APP, please visit the official website.

5. APP Use guide

5.3 Device Interaction / 5.3.1 Basic Interaction

Kwun ID

Starting berth ode
Click icon to switch

Off-line time recording

Mileage, temperature, line count and battery status display

Full size type
Click the icon to switch

Full size type display
Includes grid line and cell number types

Job status display

The joystick control
Click the button to enter

more functions

Cleaning mode
Click the icon to switch

Cleaning task display
Click the "+" and "-" ICONS to adjust

Login time record

Anti-fall sensor shows

Direction and inclination display

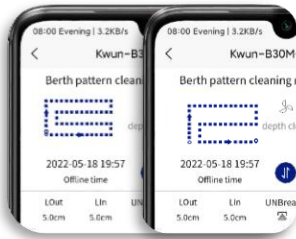
Array row limit
Click on the icon to switch

Device status display

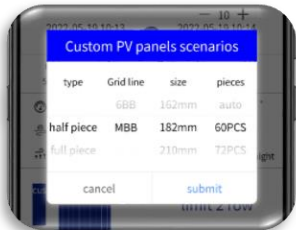
Start the device remotely
Click the button to set

5. APP Use guide

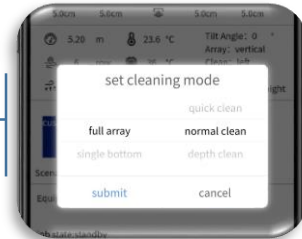
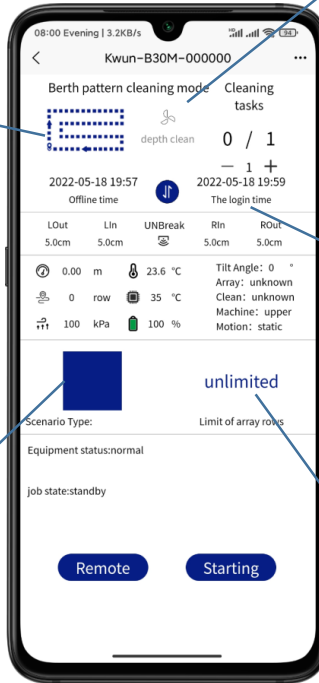
5.3 Device Interaction / 5.3.2 Custom job



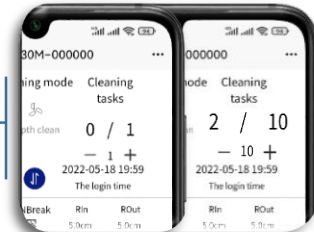
Custom mooring mode
Berth at the starting/adjacent corner



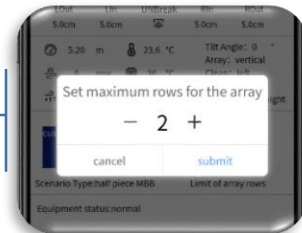
Custom PV array scenarios
Type/grid line/size/number of pieces



Custom cleaning mode
Array/Single bottom
Quick/Normal/Deep/Severe



Customize cleaning tasks
1 to 10/999 times



User-defined array row limit
Unlimited / 1 ~ 100 lines

5. APP Use guide

5.3 Device Interaction

5.3.3 Other interactions

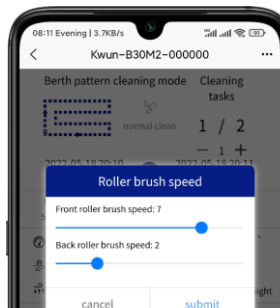


Roller speed

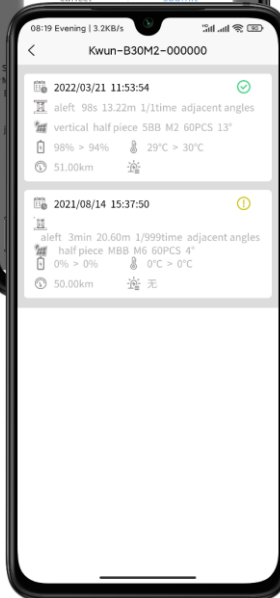
Click on the icon



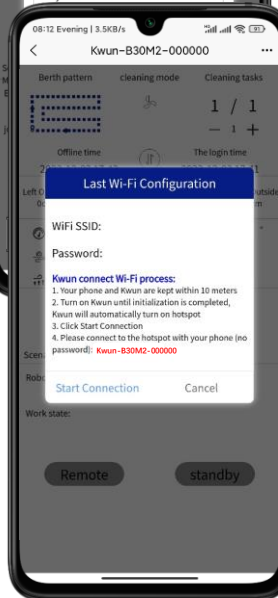
Work record



OTA Firmware Upgrade



Wi-Fi Settings



Log information



Online instruction manual



* For more tutorials on the APP, please visit the official website

6. Optional features

6.1 Remote control operation function (optional)

6.1.1 Brief introduction

When the 4G signal is weak lead to the Kwun cannot be controlled by APP or autonomous operation is not supported, the Kwun with remote control operation function can take over and operate the Kwun manually in time by the remote control.

6.1.2 Announcements

1. When the remote is turned on, the Wi-Fi function will be disabled due to signal interference. When the remote is turned off, the Wi-Fi function will be restored after a period of time.
2. The optional functions must be completed before leaving the factory, return to the factory to install parts will also charge the corresponding cost of hours, parts and express fees.
3. Use two 18650 batteries and 5V power adapter compatible with market standard Micro-USB port for charging.
4. Do not let the remote control immersed in water, if into the water, please timely wipe with a soft dry cloth, and immediately turn off the power.
5. Remote control failure or damage, need to send back to the original factory maintenance with Kwun.

6.1.3 Parts list

NO.	Name	PCS	NO.	Name	PCS
1	Remote control	1 PCS	2	18650 Battery	2 PCS
3	Aerial	2 PCS	4	Micro-USB cable	1 PCS
5	Bracket	1 PCS	6	Lanyard	1 PCS

6.1.4 Specification

Transmission distance	The average measured distance of common high-rise obstacles is about 100m (Related to usage scenarios)
Missing connection detection interval	3s
Operating current/voltage	100mA / 4.2 V
Battery	18650 Battery * 2
Charging port	Micro-USB
Battery life	≈ 25h
Spectrum	2.400-2.483GHz
Weight	0.525Kg
Size	L 160mm * W 150mm * H 50mm



*** For more tutorials on how to use remote control functions, please visit our website.**

6. Optional features

6.1 Remote control operation function (optional)

6.1.5 Interface meaning

NO.	Name	Function
1	Aerial	Data transmission
2	Switch button	Long press the switch machine
3	Button A	Take over control Kwun (memory)
4	Button B	Roller switch control (with memory)
5	Three-way switch E	Driving speed regulation
6	Three-way switch F	Central suction cup control
7	Left rocker X1、Y1	Rocker control (low priority)
8	Right rocker X2、Y2	Fixed control (high priority)
9	Micro-USB port	Charging port
10	Power indicator light	Display battery power
11	Bracket connection column	Connect bracket
12	Battery cover	Install 18650 battery
13	Strap retaining ring	Connect the strap



* Turn off the A button, stay in the standby mode without alerts, press the joysticks inward then downward, and hold for 1 sec, to activate auto operation.

6.1.6 Meaning of the buzzer warning tone

Three short sounds: boot prompt tone;

Rapid continuous short sound: low power;

Slow and persistent short sound: Kwun is not connected;

*** For more tutorials on how to use remote control functions, please visit our website.**

* Remote control mode is a header mode with Kwun itself as the reference coordinate system, Instead of headless mode with geographic or operator reference frames.

* The blue light on the Switch button blinks when charging and is steady on when fully charged.

* Remote boot does not directly control Kwun, need to trigger A button to take over control Kwun, so in the case of Button A not trigger, remote control any control instruction will be invalid.

* When the remote is turned on, the Wi-Fi function will be disabled due to signal interference.

When the remote is turned off, the Wi-Fi function will be restored after a period of time.

6. Optional features

6.1 Remote control operation function (optional)

6.1.7 Use case

6.1.7.1 Autonomous interruption of no 4G signal resulting in failure to recover the Kwun

1. Long press switch button to boot, ahead of three short buzzer sound prompt after startup without slow continuous short sound, connecting Kwun successfully.
2. When Kwun autonomous operation abort and no 4G signal, press A button remote control over Kwun enter A state of remote control, button A normally on, Kwun green light flashing.
3. Through control rocker cooperate, Kwun remote control to the desired location, press A remote control key exit over Kwun into standby mode, button A is often destroyed, Kwun green light is steady on.
4. By pressing the B button of the remote control to switch the roller brush, the three-gear switch F can be turned down to control the adsorption of the central sucker to assist the turning.

6.1.7.2 In special scenarios, there is no 4G signal and the APP cannot be cleaned remotely

1. After completion of the Kwun boot, long press the remote control switch button to boot, buzzer after three short voice prompt boot without slow continuous short sound, connecting Kwun successfully.
2. Click A button to take over the Kwun into the remote control state, button A normally on, Kwun green light flashing.
3. Click the button B of the remote control to open the roller brush. With the left and right rocker, dial up and down the three-gear switch E to adjust different speed modes to complete the required cleaning task.
4. Click on the remote control button to turn off the roller, often destroyed button B, click A button to exit the takeover 垠 into standby mode, button A is often destroyed, Kwun green light is steady on.
5. Pay attention to the remote control AB button has the memory function, the remote control is not used to close in time, avoid the next time the remote boot interrupt operation over Kwun directly.

*** For more tutorials on how to use remote control functions, please visit our website.**

6. Optional features

6.1 Remote control operation function (optional)

6.1.1.7 Use case

6.1.1.7.3 Common operation



Long press the switch button to turn on/off

Three short buzzer sound prompt after startup without slow continuous short sound, has been successfully connected Kwun, can press A key to take over the control Kwun at any time.

Click the A key to take over/exit control

Normally on button A, Kwun green light flashing, have control over successfully, by rocker and other function keys control Kwun operations



Left rocker **Rocker control**

Free movement in multiple directions
(Low priority)



Right rocker **Fixed control**
Only forward, backward, and turn
(High priority)

Install a bracket to secure the phone

When the components have many intervals and need to be frequently moved to other arrays, the remote control controls the handling process and the mobile phone starts autonomous operation

* When the remote control is disconnected, maintain the last remote control command for 3 seconds, and pay attention to the safety in the edge danger area. It is recommended to switch to the rocker mode to slow down the movement speed or turn down the three-gear switch E to enter the low-speed mode.

*** For more tutorials on how to use remote control functions, please visit our website.**

7. Replacement of commonly used accessories

7.1 Battery replacement/low power condition (about 240min when full power works)

1. Turn off the power and make sure the power is off
2. Unscrew the battery cover retaining bolt and open it
3. Take the battery out
4. Place the spare battery in alignment
5. Close the battery cover and tighten the retaining bolts



Self-cleaning stuff wear or pollution,
Can buy it cutting replacement.
Specification: 100*65*10mm

7.2 Replacement of roller bracket/failure to meet the requirements of cleaning or handling

● Brush roller bracket mounting

1. Hold the handle of the brush holder with both hands to lift the brush holder, and place the corresponding flange bearing of the rotating slide of the brush holder.
2. Tighten the limit holes on the left and right sides with limit bolts.
3. Make sure the power cable of the roller brush is off. Connect the power cable of the roller brush to the installation.

● Brush roller bracket be removed

1. Prepare the M3 hexagon wrench to ensure the roller brush is not working and disconnect the power cable of the roller brush.
2. Use the M3 hexagonal wrench to unscrew the right and left roller brush limit bolts.
3. Hold the handle of the brush holder with both hands and lift the brush holder along the rotating slide to disassemble.



7.3 Replacement of roller brushes/failure to meet cleaning requirements

1. Use M4 hex wrench and 7 open wrench to unscrew the three groups of bolts and nuts connected to the brush roller shaft on the left and right sides (one group on the left is exposed, and the other two groups on the right are hidden in the brush, 2cm away from the transmission box).
2. Remove the four groups of bolts and nuts at the upper and lower ends of the left plate from the brush roller support using an M4 hex wrench and a 7 open end wrench.
3. Remove the left plate from the brush roller support and remove the old brush.
4. Select a spare roller brush and insert its right end into the drive shaft on the right side of the roller brush support.
5. Install the left plate into the alignment hole on the brush roller support (the brush roller drive shaft is inserted into the brush roller axle hole first), and tighten the four sets of bolts and nuts to secure the plate.
6. Adjust the position of the brushes on the left and right brush roller shaft, find the two brush roller shaft holes in the right bristles and align them with the holes of the brush roller shaft on the right, and tighten the two groups of bolts and nuts.
7. Rotate the brush roller and the brush holder drive shaft in the left plate to align the brush roller shaft hole with the brush holder drive shaft hole, and tighten the bolts and nuts.

7.4 Self-cleaning replacement/severe wear or contamination

1. Prepare a new self-cleaning sponge and take it out from the side.
2. Insert the replacement self-cleaning pearl cotton into the self-cleaning support from the side until the bottom of the side.

* For more tutorials and videos on commonly used parts replacement methods, please visit the official website

7. Replacement of commonly used accessories

7.5 Crawler belt replacement/severe wear or contamination

1. Prepare the replacement track and spring pliers, and prop up the kwun body to lift the track off the ground.
2. Remove the shaft retaining ring (spring) of the driving wheel and the driven wheel using spring pliers, and remove the outer retaining ring on the driving wheel and the driven wheel.
3. Take out self-cleaning pearl cotton.
4. Reach into the inside of the track and take it out from the inside out to complete the track disassembly.
5. Use the caterpillar to be replaced and install the caterpillar.
6. Put the track into the driving wheel, the slave wheel and the synchronous wheel in turn, and then press the track into the inner retaining ring of the driving wheel with force.
7. Stuff with self-cleaning pearl wool.
8. Install the outer retaining ring to the driving wheel and the driven wheel, and use the spring pliers to set the spring in the spring groove of the driven wheel and the driving wheel respectively.
9. Check to ensure that all driving wheels and external retaining rings of driven wheels are inside the spring grooves to complete installation.
10. After a long time of use, the track surface becomes smooth and loses friction. Can use 1000 mesh sandpaper, grinding track surface to increase friction.

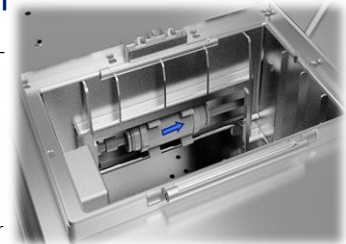
* Track used for a long time, its surface becomes smooth and loses friction, 1000 mesh sandpaper can be used to grind the track surface diagonally to increase friction.

7.6 Replacement /Damage of the central sucker

1. Prepare the M4 hex key, and erect the Kwun body.
2. Loosen the four bolts on the central suction cup and the four bolts on the pressure ring of the dust ring using an M4 hexagon socket wrench.
3. Remove the dust jacket from the rotor of the rotary table.
4. Make use of the scalability of the new dust jacket to stretch the central through hole into the rotor and stator of the rotating table.
5. Put the pressure ring on the dust cover and press the dust cover on the body base and align with the screw hole.
6. Tighten the pressure ring on the dust cover and secure the dust cover to the base by inserting four bolts using an M4 hex key.
7. Connect the central sucker to the rotor hole of the rotary table, and tighten the four bolts using an M4 hex key.

7.7 Vacuum filter replacement / serious water accumulation or ash accumulation

1. After removing the battery, remove the vacuum filter from the vacuum filter holder.
2. Press the quick change pipe connector of the air inlet, and remove the air inlet pipe connected by the three-way pagoda connector.
3. Press the quick change pipe connector of the air outlet and remove the air outlet pipe connected through the pagoda connector.
4. Check the label of inlet and outlet of the shell of the new vacuum filter.
5. Press the outlet pipe directly connected to the pagoda connector into the outlet quick change pipe connector.
6. Press the air inlet pipe connected by the three-way pagoda connector into the quick change pipe connector of the air inlet.
7. Clamp the vacuum filter into the vacuum filter holder.



* For more tutorials and videos on commonly used parts replacement methods, please visit the official website

8. Daily cleaning and maintenance

PARTS	Store	Timing of cleaning	Cleaning way
Kwun	Turn off the power, and do not store in high temperature, humidity or sun exposure	About 240 minutes of interval work or serious ash	Clean the surface with a soft cloth
Water cube	Dump all the water, and do not store in high temperature, humidity or sun exposure environment		
Battery	Do not store in the environment of high temperature, humidity or sun exposure and every 1.5 months to replenish electricity, prevention of over-discharge of the battery	-	-
Roller brush	Do not store in high temperature, humidity or sun exposure	About 240 minutes of interval work or serious ash	Use a soft cloth to comb up and down and wind, do not wash with water
Crawler belt			1. Place the wet rag on a flat surface. 2. Enter remote control mode through APP to move the device to drive the track cleaning.
			1. Overhead fixed equipment. 2. Press wet rag or foam onto the track. 3. Move the track in remote control mode through APP to drive the track cleaning.
Self-cleaning module		Work about 60min intervals or replace the module process	1. Scraper the dust on the brush along the direction of the brush hair, and use a hair dryer to help blow the dust to complete the simple cleaning of the brush. 2. Knock the brush base, shake off the dust, and then wipe with a soft cloth to complete the simple cleaning of the brush base.
		About 240 minutes of interval work or serious ash	1. Scraper the dust on the brush along the direction of the brush hair, and use a hair dryer to help blow ash. 2. Flush or soak the brush. 3. Use a dry cloth or sponge to press to absorb moisture, and be careful not to twist the bristles. 4. The brush hair should be naturally air-dried downward to avoid direct sunlight to complete deep cleaning with the brush.
			1. Flush or soak the brush base. 2. Use a dry rag or sponge to dry the brush holder. 3. Place in the air to dry or use a hair dryer to dry, complete the deep cleaning of the brush base.

9. Recommended Operating Conditions (ROC)

Clean way	Project	ROC	Data source
Dry Brushing	PV panel Angle	0~20°	Measured in South China before February 2022
	PV panel surface temperature	-20~80℃	
	The environment temperature *	-20~50℃	
	PV panel Gap	40mm	
	PV panel Height difference	30mm	
	Rainfall	Water Washing Angle	
	Wind power	62~74Km/H Fresh Gale	
	IP Rating	IP55	
Water Washing	PV panel Angle	0~10°	
	PV panel surface temperature	0~80℃	
	The environment temperature *	0~50℃	
	PV panel Gap	40mm	
	PV panel Height difference	20mm	
	Rainfall	25~50mm Light Rain	
	Wind power	29~38Km/H Fresh Breeze	

* Continuous working time varies with ambient temperature, PV panel angle data ultimately depends on the characteristics of the contaminant.

10. Troubleshooting

Trouble	Probable cause	Troubleshooting measure method
Device cannot start up	<ol style="list-style-type: none">1. Low battery2. Inaccurate battery installation	<ol style="list-style-type: none">1. Use the battery after it has been fully charged2. Test whether the battery plug and install is reliable and accurate
Device cannot start autonomous operation	<ol style="list-style-type: none">1. Abnormal equipment state2. Component module surface damage3. The current scenario is not supported	<ol style="list-style-type: none">1. Check the abnormal state of the device by means of indicator light and APP, and repair the abnormal state2. Check whether the components are damaged or blocked by obstacles3. Detect the PV panel grid type and gradient
The autonomous operation was terminated abruptly	<ol style="list-style-type: none">1. Equipment failure2. Continuous damage of PV panel surface3. Misoperation of APP	<ol style="list-style-type: none">1. Check the abnormal state of the device through the APP device interface or log, and fix the abnormal state2. Check whether the PV panels are damaged or blocked by obstacles

11. Kwun Limited warranty policy

11.1 General warranty terms

The Warranty (Kwunphi) shall provide warranty services to Kwun within the applicable warranty period in accordance with the terms, conditions and limitations of this "Kwun Limited warranty policy".

Your rights and obligations under this "Kwun Limited warranty policy" apply to the Warranty area in the hinterland of China (i.e. the area where you purchased the new Kwun).

If you transfer your Kwun to another warranty area, the terms of this "Kwun Limited warranty policy" will no longer apply unless otherwise required by local law.

11.2 What's Kwun?

Kwun is a kind of unmanned autonomous photovoltaic panel cleaning robot designed and manufactured by Shenzhen Kwunphi Robot Co., LTD. Kwun has been registered as a trademark by Shenzhen Kwunphi Robot company, Kwun is in essence a special noun of Shenzhen Kwunphi Robot company photovoltaic cleaning robot.

11.3 Who is the guarantor of quality?

Shenzhen Kwunphi Robot Co., LTD.

11.4 What's the warranty covers Kwun's range

This "Kwun Limited warranty policy" applies to Kwun sold by Kwunphi Robot company within the Warranty territory in the hinterland of China for the purpose of this "Kwun Limited warranty policy".

The warranty area in the hinterland of China includes 23 provinces, 5 autonomous regions and 4 municipalities directly under the Central Government of the People's Republic of China (except Hong Kong SPECIAL Administrative Region, Macao Special Administrative Region and Taiwan);

For the subsequent purchaser or transferee, no matter in which country or region he/she purchased Kwun, he/she must return to the Warranty area in the hinterland of China to obtain the warranty service.

Unless in the above areas outside the Kwunphi authorized certification of the local service center, and the service center assumes local legal responsibility, then Kwunphi transfers the legal rights and obligations of the "Kwun Limited Warranty Policy" to the local service center.

11.5 Multiple warranty terms

The warranty terms and conditions contained in this "Kwun Limited warranty policy" may vary from one part or system to another.

Warranty for a particular part or system is limited to the scope of warranty set forth in the Warranty section and other terms of this "Kwun Limited warranty policy".

11.6 Restrictions and disclaimers

Unless otherwise provided by national laws and regulations, this "Kwun Limited warranty policy" is the only express warranty that applies to your Kwun.

Remedies under this "Kwun Limited warranty policy" or any implied warranty are limited to necessary repairs, replacement of parts, replacement of Kwun or refund of Kwun.

Shenzhen Kwunphi Robot Co., LTD. does not authorize any person or entity to establish any other obligations or responsibilities on its behalf in connection with this "Kwun Limited warranty policy".

Subject to applicable laws and regulations, the Kwunphi Co., LTD reserves the right to repair or replace parts or use new (including remanufactured) parts in its sole discretion.

11.7 Rights granted by Chinese law

You have certain rights under this "Kwun Limited warranty policy". You may have other rights in accordance with applicable PRC laws and regulations.

11.8 Transfer of ownership

Subject to the limitations set forth in this "Kwun Limited warranty policy", this "Kwun Limited warranty policy" may be transferred, free of charge, to any person who legally acquired ownership of Kwun after the first purchaser (the "Subsequent Purchaser").

11.9 Who may request performance of this "Kwun Limited warranty policy"?

Subject to the laws of the People's Republic of China, the first purchaser or subsequent purchaser of a new Kwun purchased in the Kwunphi Co., Ltd the hinterland of China Warranty Area and registered or owned in the name of the first purchaser or subsequent purchaser may require performance of this "Kwun Limited warranty policy" under the terms of this "Kwun Limited warranty policy".

11. Kwun Limited warranty policy

11.10 Start and end time of warranty period

This " Kwun Limited warranty policy"shall be effective as of the date on which The first distributor or user purchaser issues a uniform invoice for Kwun sales. The warranty period is 1 year or Kwun startup service 2400 hours, whichever comes first. Where parts are repaired or replaced in accordance with this " Kwun Limited warranty policy", or Kwun is replaced, the warranty period for the repaired or replaced parts is limited to the remainder of the warranty period for the corresponding part in this " Kwun Limited warranty policy", unless otherwise provided by applicable law.

11.11 Warranty scope

This " Kwun Limited warranty policy"contains detailed information on repairs, parts replacement, Kwun replacement and refund of Kwun. The details are as follows. All remedies provided to you under this " Kwun Limited warranty policy" are repairs or replacement of parts for quality problems within the scope of warranty or replacement of your Kwun or refund of Kwun under certain limited circumstances as required by Chinese laws and regulations. The Kwunphi has the discretion to use new parts (including remanufactured parts) for repairs. All parts or other components replaced by Kwunphi in accordance with this " Kwun Limited warranty policy", as well as Kwun returned to bugs or Kwun replaced by Kwunphi co.,ltd, are Kwunphi's exclusive property, unless otherwise provided by applicable laws.

11.12 Use of personal contact information

If you obtain services under this warranty, you authorize Kwunphi to store, use and process work log information as well as your contact information, including name, phone number, address and email address. Monsters can use this information to carry out services under this Policy. We may contact you to ask if you are satisfied with our warranty service or to notify you of any product recalls or safety issues. To achieve the above objectives, you authorize Kwunphi to transfer your information to any country or region in which we do business and to make it available to organizations acting on our behalf. We may also disclose this information if required by law.

11.13 Kwun Three packs of limited warranty / Repair

The free warranty service must meet the following conditions:

- √ The products purchased from the buyer are normally used within the specified warranty period and have non-man-made performance faults;
- √ No unauthorized disassembly, disassembly or addition other than the official instructions, other non-human caused fault;
- √ Provide valid proof of purchase, receipt and tracking number.

The following circumstances do not belong to the free product warranty service:

- × Man-made collision and drop accidents not caused by quality problems of the product itself;
- × Damage caused by unauthorized modification, dismantling and shell opening guided by unofficial instructions;
- × Damage or water inflow caused by improper installation, use and operation not in accordance with the instructions;
- × Damage caused by customer's own repair of assembly parts without official instructions;
- × Damage caused by circuit modification guided by unofficial instructions, or improper matching of battery pack and charger;
- × Damage caused by all operations not operated in accordance with the product instructions;
- × Damage caused by operation in harsh environment, such as wind, rain, sand, etc.;
- × Damage caused by operation in case of mutual interference with other wireless devices, such as transmitter, graph signal, Wi-Fi signal interference, etc.;
- × Damage caused when working at a face with a deviation beyond the designated inclination Angle;
- × Damage caused by forced operation in the case of aging or damage of parts;
- × Damage caused by reliability and compatibility problems when used together with third-party components certified by non-weird insects;
- × Damage caused by insufficient discharge when the power is low or the battery with quality problems is used;

Signs of machine serial number, factory label and other marks being torn or altered;

- × Failed to ship the item within 7 calendar days after contacting monster to confirm warranty service.

You can apply for return if you meet the following conditions:

- √ Within 7 calendar days after you receive the goods, the outer packaging, accessories, gifts and instructions of the products are complete, and there is no artificial damage, not activated use, will not affect the second sale;

11.13 Kwun Three packs of limited warranty / Replacement or Return

- √ Within 7 calendar days of your receipt of the goods, you find that the product has a performance fault that is not human-caused.

11. Kwun Limited warranty policy

11.13 Kwun Three packs of limited warranty / Replacement or Return

Kwunphi reserves the right to reject your return request under the following circumstances:
requests for return more than 7 calendar days after receipt of goods;

- × The returned goods are incomplete, the outer packing, accessories, gifts, instructions are incomplete, or the appearance is damaged due to artificial reasons;
- × Failing to provide legal purchase vouchers or documents, or forging or altering the documents;
- × Non-product quality problems caused by the collision, falling, and artificial personal modification, into foreign matter (water, oil, sand, etc.), incorrect installation, not according to the instructions of the use and operation caused by the quality of goods;
- × Tear and alter labels, machine serial numbers, waterproof marks, security marks, etc.;
- × Products damaged by unavoidable factors such as fire, flood, lightning strike, traffic accident and other irresistible forces;
- × After contacting monster to confirm return service, the corresponding item is not mailed within 7 calendar days;

If one of the following conditions is met, a replacement can be requested:

- √ Within 15 calendar days after receiving the goods, you find that the products are damaged in the course of transportation and can provide the proof of damage provided by the transportation company;
- √ Within 15 calendar days of receipt of the goods, you find that the product is substantially inconsistent with the description of the original product in one or more important aspects;
- √ Within 15 calendar days of your receipt of the goods, you find a performance fault that is not human-caused.

The Kwunphi has the right to refuse your request for replacement under the following circumstances:

- × Requests for replacement more than 15 calendar days after receipt of goods;
- × Failing to provide legal purchase vouchers or documents, or forging or altering the documents;
- × Incomplete replacement of goods, or artificial appearance caused by damage;
- × Detected by the technical support department of strange insects, there is no quality problem itself;
- × Non-own quality problems caused by the collision, falling, and artificial personal modification, into foreign matter (water, oil, sand, etc.), incorrect installation, not according to the instructions of the use and operation caused by the quality of goods;
- × Tear and alter labels, machine serial numbers, waterproof marks, security marks, etc.;
- × Products damaged by unavoidable factors such as fire, flood, lightning strike, traffic accident and other irresistible forces;
- × After contacting monster to confirm the replacement service, the corresponding item is not mailed within 7 calendar days;
- × Goods damaged due to transportation propose replacement of goods but fail to provide the certificate of goods damaged issued by the transportation company;

11.13 Kwun Three packs of limited warranty / Pay for repairs and related

Different countries purchase Kwun, in view of the product or the use of different conditions, during the warranty period of return and replacement and warranty services will be different.

For details, please see <http://www.Kwunphi.com/cn/service/policy>.

- * You need to send the problem back to Kwun. After receiving the problem machine, the Kwunphi will conduct fault detection to Kwun to determine the responsibility for the problem. If the quality defect belongs to Kwun, the Kwunphi shall bear the testing fee, material fee, labor fee and express fee.
- * If Kwun does not meet the conditions of free maintenance after testing, you can choose to pay for repair or send it back to the original machine.
- * If the problem of the machine is not within the warranty scope (such as man-made damage to the machine), the Kwunphi will charge the corresponding testing fee, replacement fee, testing fee, labor fee and express fee.
- * Kwun Maintenance may cause data loss, so you must back up data in advance.
- * If the battery is seriously damaged, such as damaged cell, bulge, leakage and so on, it will be scrapped and will not be returned.
- * In view of the differences between Kwun's versions, Kwun does not support global co-guarantee, and can only provide warranty service in the designated regional repair center of the Kwunphi. If you need to designate a repair center in the non-purchase area, the Kwunphi will be handled according to the local stock situation and only provide a paid service.
- * If the address you provide is wrong or the recipient refuses to accept, the customer shall bear the loss caused thereby.

11. Kwun Limited warranty policy

11.13 Kwun Three packs of limited warranty / Pay for repairs and related

- * If the express cannot be delivered or returned to the bug after being rejected, the bug will take care of it and the storage fee will be calculated from the date of return. Due to the corresponding requirements of the storage environment, the storage charge standard is: 100 yuan/day. When the storage charge is equivalent to the residual value of Kwun, the Kwunphi will have the right to dispose of the Kwun. (Kwun Residual value calculation method: residual value = original selling price - this maintenance cost)
- * If you wish to send Kwun overseas, you need to obtain the approval of the worm, and the resulting customs duties and customs clearance costs should be borne by you.
- * If Kwun is flooded, the performance of Kwun will be seriously affected, and there is no maintenance value, so the Kwunphi can not provide maintenance service, we will provide replacement Kwun service, please note and send it back as appropriate.
- * Kwun Please properly dispose the personalized items and decorations (including but not limited to Kwun decorative stickers, UAS stickers, paint and spray paint, etc.) attached to the original Kwun before sending and repairing, the Kwunphi will not be responsible for the damage and loss of the personalized items and decorations.
- * In order to ensure your normal rights and interests, please check whether Kwun is in good condition (whether there is any damage caused by logistics and other reasons) when signing for the goods. If Kwun is abnormal, please feedback to us within 7 calendar days from the date of receipt; Otherwise, it will be regarded as your default Kwun without damage and normal performance. According to the claim management process of the logistics party, if the goods are damaged due to logistics transportation, they should contact the Kwunphi within 24 hours.

11.14 Exclusions and Limitations / Quality assurance restrictions

This " Kwun Limited warranty policy"does not cover direct or indirect damage or failure to Kwun caused by normal wear and tear or degradation, abuse, misuse, negligence, accident, improper maintenance, operation, storage or transportation, including but not limited to:

- × After discovering the quality problem under this " Kwun Limited warranty policy", fail to send Kwun to the Kwunphi Service Center or the repair enterprise authorized by the Kwunphi, or fail to repair or repair in a manner recommended by the Kwunphi;
- × collision, falling and burning accidents caused by non-product quality problems;
- × Damage caused by unauthorized modification, dismantling and shell opening guided by unofficial instructions;
- × Damage caused by incorrect installation, use and operation not in accordance with instructions;
- × In the absence of official instructions, the customer repairs the damaged parts by himself;
- × Damage caused by circuit modification guided by unofficial instructions, or improper matching of battery pack and charger;
- × Damage caused by all operations not operated in accordance with the product instructions;
- × Damage caused by operation in harsh environment, such as wind, rain, sand, etc.;
- × Damage caused by operation in case of mutual interference with other wireless devices, such as transmitter, graph signal, Wi-Fi signal interference, etc.;
- × Damage caused when working at a face with a deviation beyond the designated inclination Angle;
- × Damage caused by forced operation in the case of aging or damage of parts;
- × Damage caused by reliability and compatibility problems when used together with third-party components certified by non-weird insects;
- × Damage caused by insufficient discharge when the power is low or the battery with quality problems is used;
- × Uninterrupted operation of the product;
- × Data loss or damage caused by the product;
- × Failure or damage caused by any third party products;
- × Change or remove the product or component with the identification label.

11.14 Exclusions and Limitations / Other restrictions and exclusions

Apart from the above exclusions and limitations, this " Kwun Limited warranty policy"does not cover:

The Kwunphi is only liable for loss or damage to the product if: the product is already in Kwunphi possession; Or the product is on the way to be transported by the Kwunphi.

Kwunphi is not responsible for the loss or disclosure of any data contained in the product, including confidential, proprietary or personal information.

11. Kwun Limited warranty policy

11.14 Exclusions and Limitations / Other restrictions and exclusions

For the following situation, regardless of the provisions of this " Kwun Limited warranty policy" is any benefits to its fundamental purpose, no matter the claim is based on contract, warranty, negligence, strict liability or other responsibility theory, strange insect and its associated enterprises, suppliers, distributors, or service provider shall not be responsible for, if already know the possibility of these situations happens is no exception:

- 1) Claim for damages from a third party;
- 2) Loss, damage or disclosure of your data;
- 3) Special, incidental, indirect or consequential damages, including but not limited to loss of profits, business revenue, goodwill or anticipated savings.

The above restrictions do not apply to damages for personal injury, including death, and damage to real and tangible property for which bugs are legally liable.

Some countries or territories or jurisdictions do not allow any screening or limitation for incidental or consequential damages, and therefore the above exclusion or limitation may not apply to you.

11.15 Claims for damages

Kwunphi hereby disclaims all indirect, incidental, special and consequential losses arising out of or in connection with Kwun, Including but not limited to between Kwunphi service center of transportation, Kwun loses value, time loss, revenue loss, the loss due to unavailable Kwun, personal or commercial property damage, inconvenience, or worse, spiritual pain or damage, loss of business (including but not limited to profit or loss of income), bus, car rental, maintenance call, accommodation, And telephone, fax and mail charges and other incidental charges. The full liability of Kwunphi and its affiliates, suppliers, distributors or service providers is limited to the direct loss you actually suffer, no more than the amount you paid for the products, regardless of the cause. Within the scope of the law, whether your claim is based on contract, tort (including negligence and gross negligence), breach of warranty terms or conditions, misrepresentation (whether in negligence or other), except the above restrictions and terms and conditions are applicable, even if the Kwunphi has been told the possibility of such damage or such damage can be predicted reasonably.

12. Warranty and after-sales service

Warranty and after-sales service			
Products such as fault, refer to the " Kwun Limited warranty policy" 's quality assurance scope, Shenzhen Kwunphi Robot Co., Ltd. to give consumers the corresponding maintenance or replacement guarantee. This warranty does not cover any damage caused by improper use, connection, or maintenance, accident or abuse by others.			
Please provide the following information when contacting warranty service			
Product model		Full name	
Address and telephone number		Purchase date	
Problem description			

If you have any doubts or questions about this product, please contact our customer service hotline

Tel: 400-878-6861

Email address: service@kwunphi.com

www.kwunphi.com